



## Technical Details

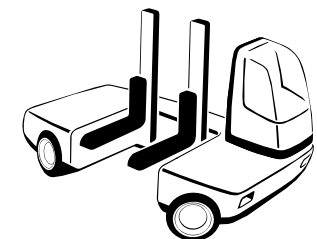
Characteristics								
Manufacturer	BAUMANN							
Type			35/10	35/12	35/14	40/10	40/12	40/14
Capacity	Q	kg	3.500	3.500	3.500	4.000	4.000	4.000
at load center	C	mm	500	600	700	500	600	700
Platform width	NB	mm	1.000	1.200	1.400	1.000	1.200	1.400
Engine	Diesel							
Steering	Electric-hydraulic; multiway							
Tyres	Cushion							
Tyres x=driven	2/2x							
Performances								
Stability	as per EN 1726							
Travelling speed		km/h	16 / 15 (without/with load)					
Lifting speed		m/s	0,45 / 0,4 (without/with load)					
Lowering speed		m/s	0,4 / 0,4 (without/with load)					
Traverse speed		m/s	0,3 / 0,3 (without/with load)					
Gradeability		%	16 / 16 (without/with load)					
Draw bar pull		kN	27,5 (maximum)					
Chassis								
Number of tyres	front/rear	4 / 2						
Tyres - nominal size	front/rear	16x6x10 1/2 / 18x9x12 1/8						
Tyres - outside diameter	front/rear	406 / 457						
Service brake 1	hydrostatic; drive wheels							
Service brake 2	multiple disc brake / drive wheels							
Parking brake	electric-hydraulic multiple disc brake / drive wheels							
Propulsion								
Combustion engine	Make	VM Detroit Diesel						
	Fuel	Diesel						
	Type	VMD 754 E2						
	Performance	47 kW / 64 hp						
	Revolutions	2.300 U/min-1						
	Cylinders	4						
Gear	Displacement	2.970 cm <sup>3</sup>						
		hydrostatic displacement pump and wheel motors on angle-drive						
Gear Box	variable drive							
Battery	12V / 100Ah							



## FOXX - 4 Wheel - Multiway Sideloader



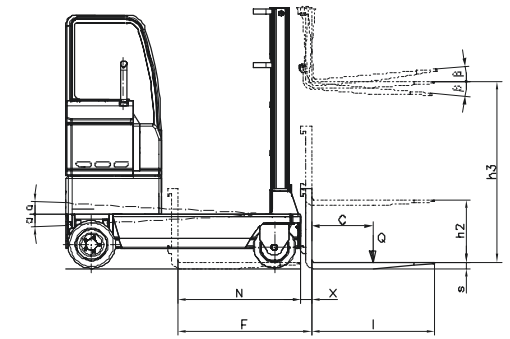
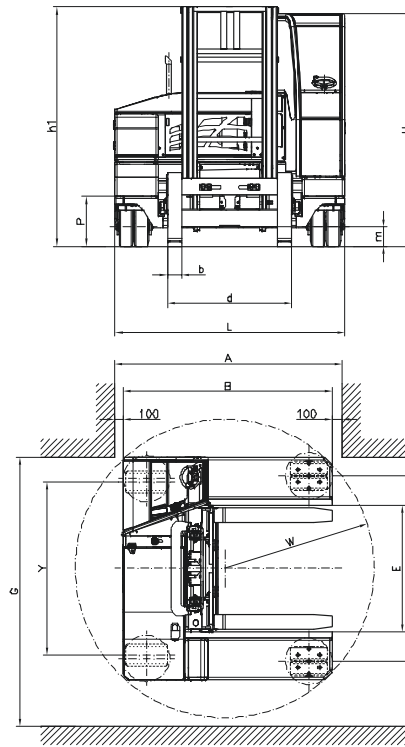
SHS GmbH  
 Im Ehlet 1  
 77815 Buehl  
 Germany  
[www.sideloaders.de](http://www.sideloaders.de)





## Why „FOXX“?

- Maximum stability for more safety
  - By four wheels including a revolutionary pendulum system
  - Levelling off poor ground conditions via one central hydraulic-cylinder, mounted at drive axle
  - Stand trapeze formed by resting chassis on buffers
- Agility
  - Manoeuvrable in smallest areas with one out of 16 steering programs.
  - Turning on spot
  - Quickest change between longitudinal and lateral drive through state-of-the-art technique.
  - two drive speeds up to 16 km/h
- Usability, Ergonomics
  - Cabin designed to assist the operator by providing an ergonomic work environment. Finger tip levers operate all hydraulic functions with unparalleled comfort and precision.
  - Multi functional display, allowing the operator to access all relevant driving and truck information
  - Easiest selection of all steering programs by pressing a button
  - Easy maintenance access by tipping the cabin
- Hydraulics, Electrics
  - Oversized Load-Sensing hydraulic-system consisting proven parts:
    - Hydrostat- and main hydraulic-pump: REXROTH
    - Displacement pump: REXROTH
    - Steering-system and hydraulics control: PARKER
- Brakes
  - Maintenance-free oil bath multiple disk brake
- Mast and platform tilt as standard feature



Dimensions			NB 1000	NB 1200	NB 1400
Capacity	Q	kg	3.500		
Load center	C	mm	500	600	700
Platform width	NB	mm	1.000	1.200	1.400
Fork length	L	mm	1.000	1.200	1.400
Fork width	b	mm	150		
Fork thickness	s	mm	50		
Mast traverse	F	mm	1.100	1.300	1.500
Load distance	X	mm	100		
Platform tilt up/down	a	°	2,0 / 2,0	2,0 / 2,0	2,0 / 2,0
Overall length	L	mm	2.400		
Overall width	B	mm	2.050	2.250	2.450
Nominal load width	B <sub>1</sub>	mm	1.050		
Well width	E	mm	1.370		
Mast	see table	h <sub>3</sub>	4.000		
Height over cabin	Cabin / max. over frame	H <sub>8</sub>	2.430 / 2.500		
Platform height		P	520		
Fork spread	min-max.	d	300 - 1.300		
Turning radius	inner	R	0		
Turning radius	outer	W	1.610		
Working aisle width	longitudinal drive	A	2.350		
Intersection aisle	90° turn	G	2.900		
Wheel track		Y/Y1	1.867 / 2.000		
Ground clearance	below mast	m	200		